

System Requirements for Applying SHA2 2048 Digital Certificate

Operating System	OS Bit	Browser	Browser Bit
Windows 7	32	IE10	32
Windows 7	32	IE11	32
Windows 7	64	IE10	32
Windows 7	64	IE10	64
Windows 7	64	IE11	32
Windows 7	64	IE11	64
Windows 8	32	IE10	32
Windows 8	64	IE10	32
Windows 8	64	IE10	64
Windows 8.1	64	IE11	32
Windows 8.1	64	IE11	64
Windows 10	64	IE11	32
Windows 10	64	IE11	64
Windows 10	32	IE11	32

Browser Settings for SHA 256 2048 System

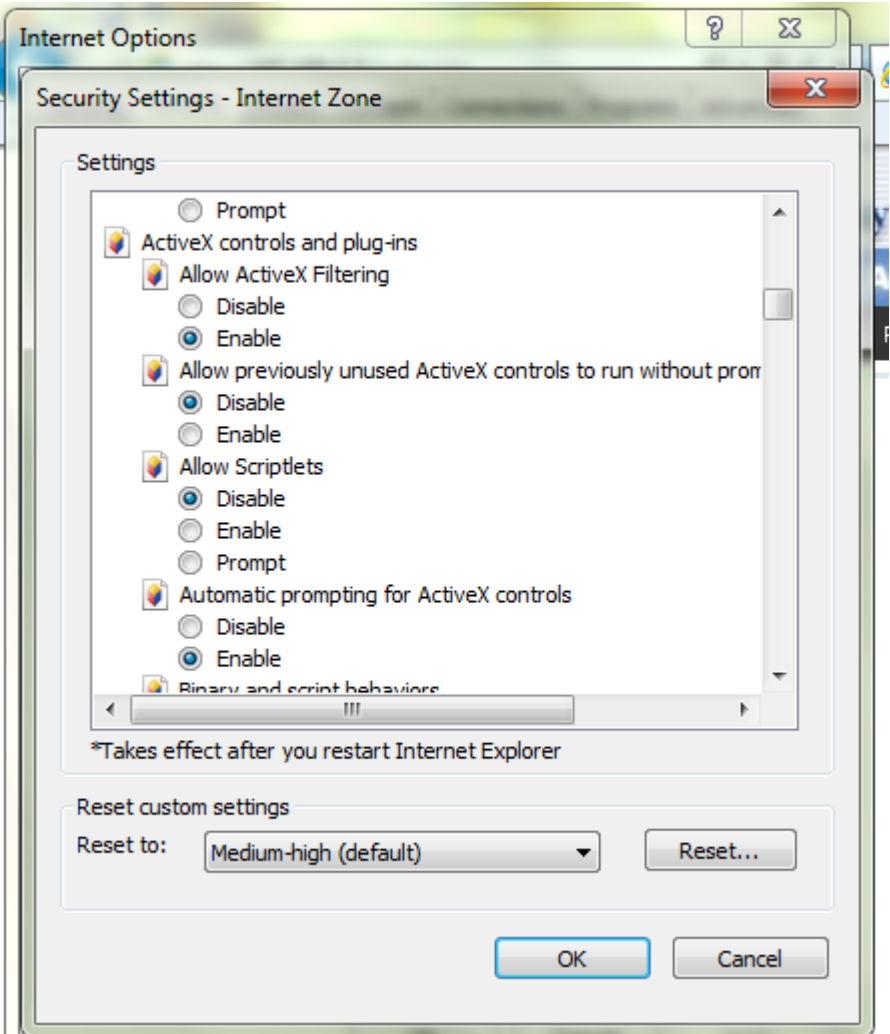
1) Make sure protected mode is turned off

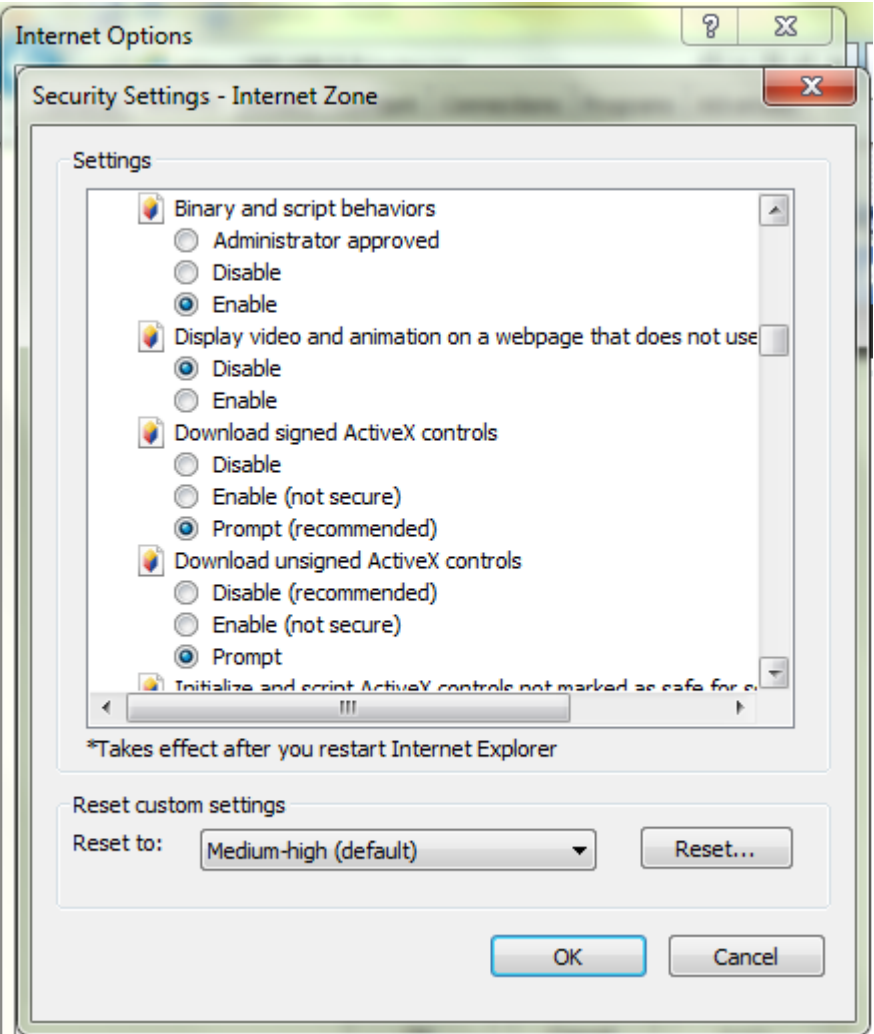
Click on Internet Explorer to get Internet Explorer Window

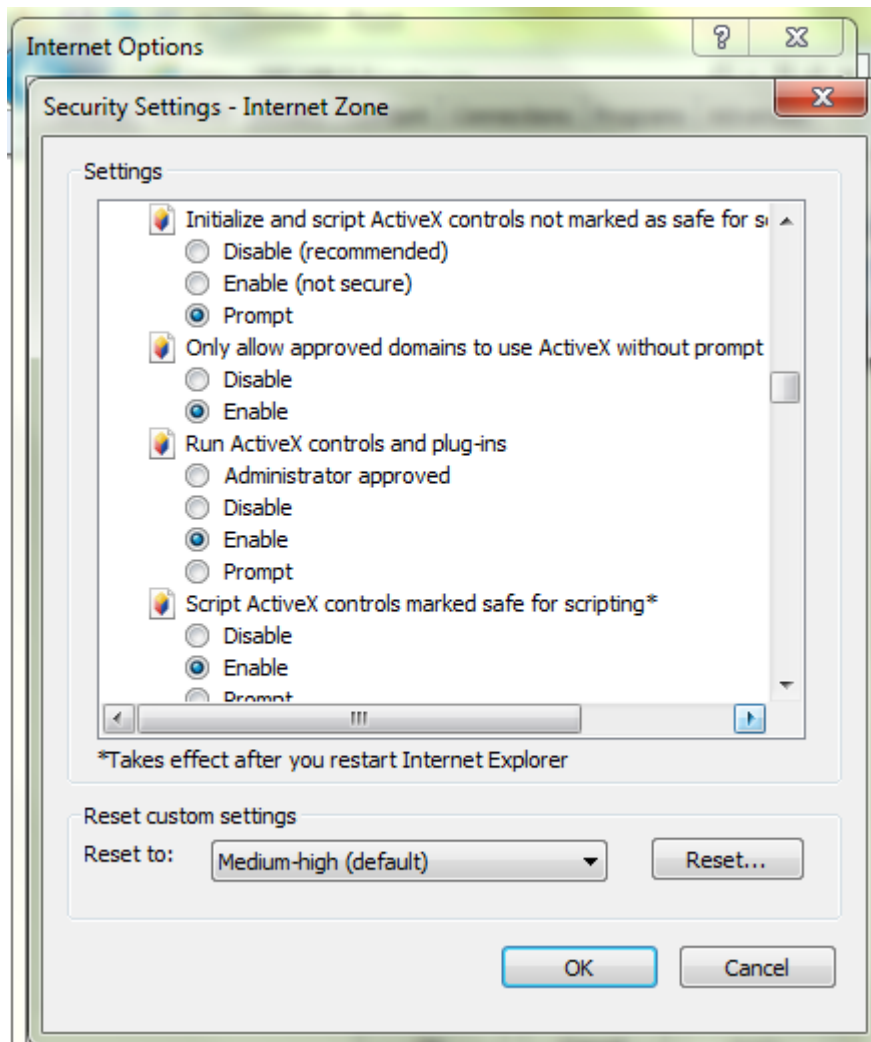
Then choose Tools → Internet Options → Security → Internet → Custom Level

2) Please Enable All Active X controls

Click on Internet Explorer to get Internet Explorer Window







Then choose Tools → Internet Options → Security → Custom Level and scroll to get Active X related options. Please do the necessary changes (As per screen shot of above).

3) Turn OFF the POP UP BLOCKER

Uncheck the Square against Turn on Pop-up Blocker. Ensure that Turn on Pop-Up Blocker with a Blocker square is unchecked.

Internet Options

General Security **Privacy** Content Connections Programs Advanced

Settings



Select a setting for the Internet zone.

Medium



- Blocks third-party cookies that do not have a compact privacy policy
- Blocks third-party cookies that save information that can be used to contact you without your explicit consent
- Restricts first-party cookies that save information that can be used to contact you without your implicit consent

Sites

Import

Advanced

Default

Pop-up Blocker



Prevent most pop-up windows from appearing.

Settings

Turn on Pop-up Blocker

InPrivate



Do not collect data for use by InPrivate Filtering

Disable toolbars and extensions when InPrivate Browsing starts